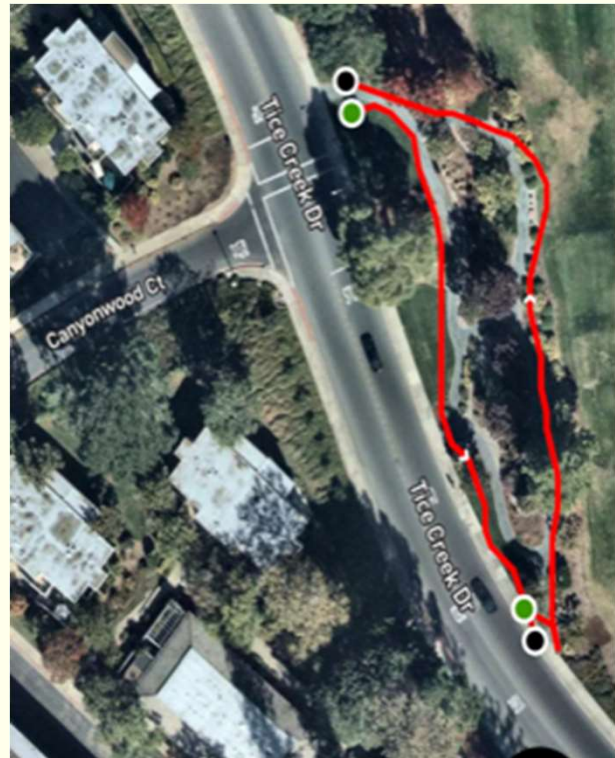




FAIRWAY PARK Walking Trail

Short trail through Fairway Park at the corner of Tice Creek and Canyonwood Drive. Views over the golf course and benches to rest on.



Length: 0.1 Miles

Difficulty: Easy

Location: Corner of Tice Creek
and Canyonwood Drive

Bathrooms: None

Parking: Along Tice Creek

Benches: Yes