

This presentation occurred on  
Aug. 25, 2022 at the GRF Board  
of Directors meeting

Some of the information might now be outdated.

# Golden Rain Foundation

## Transportation Deep Dive 2022

1

**Jerrol Reavis, Fleet & Compliance Manager**  
**Jeff Matheson, Director of Resident Services**

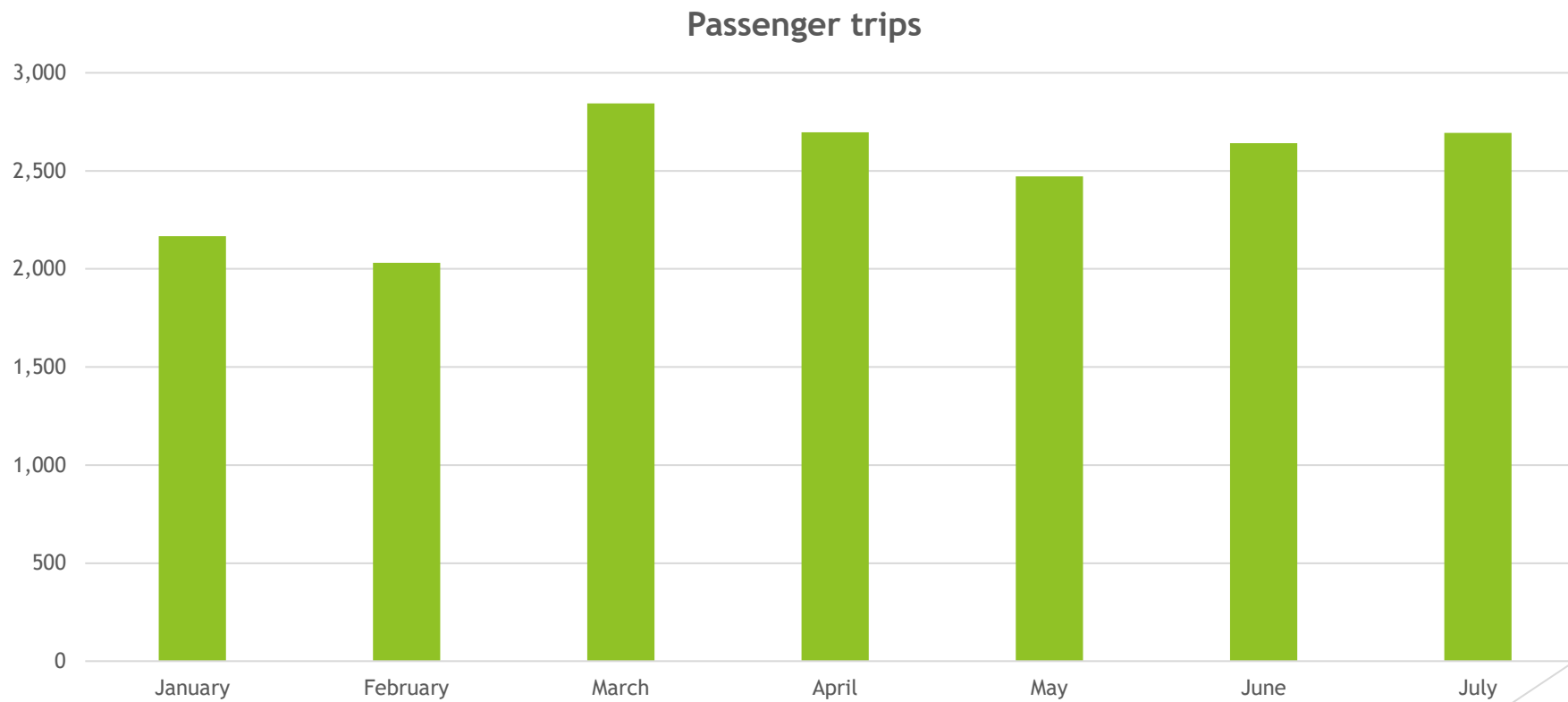
# Rossmoor Bus Service

- ▶ Service within Rossmoor and to designated destinations within Walnut Creek
- ▶ Operating hours M-F 5:50 - 6:30 p.m. (Current)
- ▶ Allocation of staffing positions in 2022 budget is 10.5 FTE
  - ▶ Vacancies in 2022 has ranged from 2-6
- ▶ Average number of rides per month in 2022 is 2,506
- ▶ 2022 Operating Budget is \$1,209,445
- ▶ Grant funding received from Measure J in 2022 is \$63,017 and funding for 2023 is \$115,000.

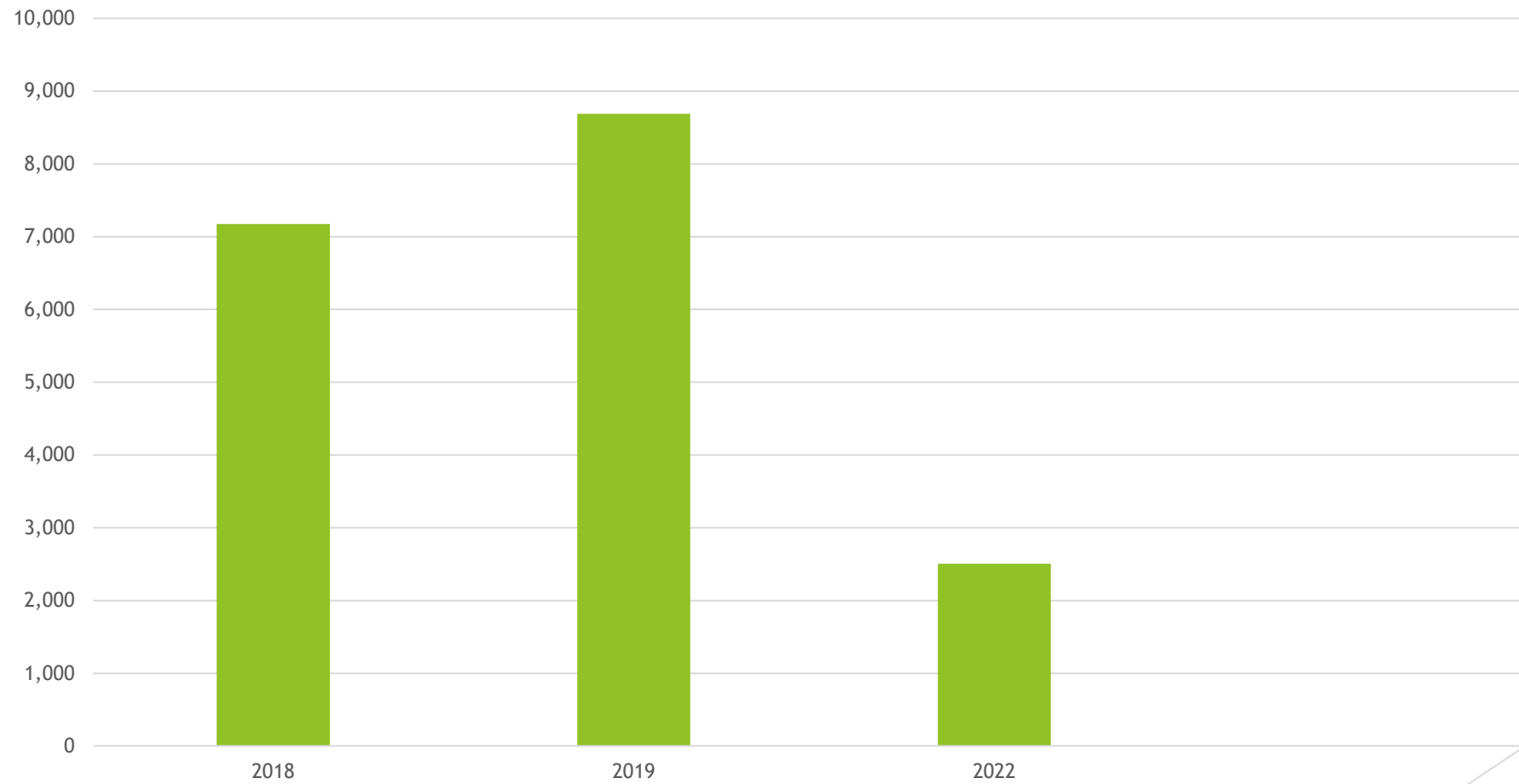
# Brief History

- ▶ Pre-covid service:
  - ▶ Operated seven days per week
  - ▶ Included fixed route, Dial A Bus, Paratransit
  - ▶ In 2019 the service provided 112,944 passenger trips
- ▶ Impacts of the pandemic on service
  - ▶ Service was reduced to Dial A Bus only
  - ▶ Capacity was limited to single passenger and then maximum of four passengers
  - ▶ Most businesses and facilities were closed limiting demand
- ▶ Recovery challenges
  - ▶ People slow to return to public transit
  - ▶ Staffing levels has impacted service capacity resulting in suspension of weekend service

# Current Ridership 2022



# Monthly Ridership



# Transportation Staffing

- ▶ 2023 Budget allocation is 10.5 FTE
  - ▶ 1 Bus Operations Foreman
  - ▶ 8.9 FTE Bus Drivers
  - ▶ 0.6 FTE Dispatcher
- ▶ Licensing required of Drivers
  - ▶ Drivers must have a Class B license with a passenger endorsement
  - ▶ All drivers are part of the DMV pull notice program
- ▶ Recruitment process
  - ▶ We advertise on Indeed and other platforms
  - ▶ Staff recruits through contact with other operators
- ▶ Training
  - ▶ New staff takes 4-6 weeks to fully train on Rossmoor Roads and operating systems

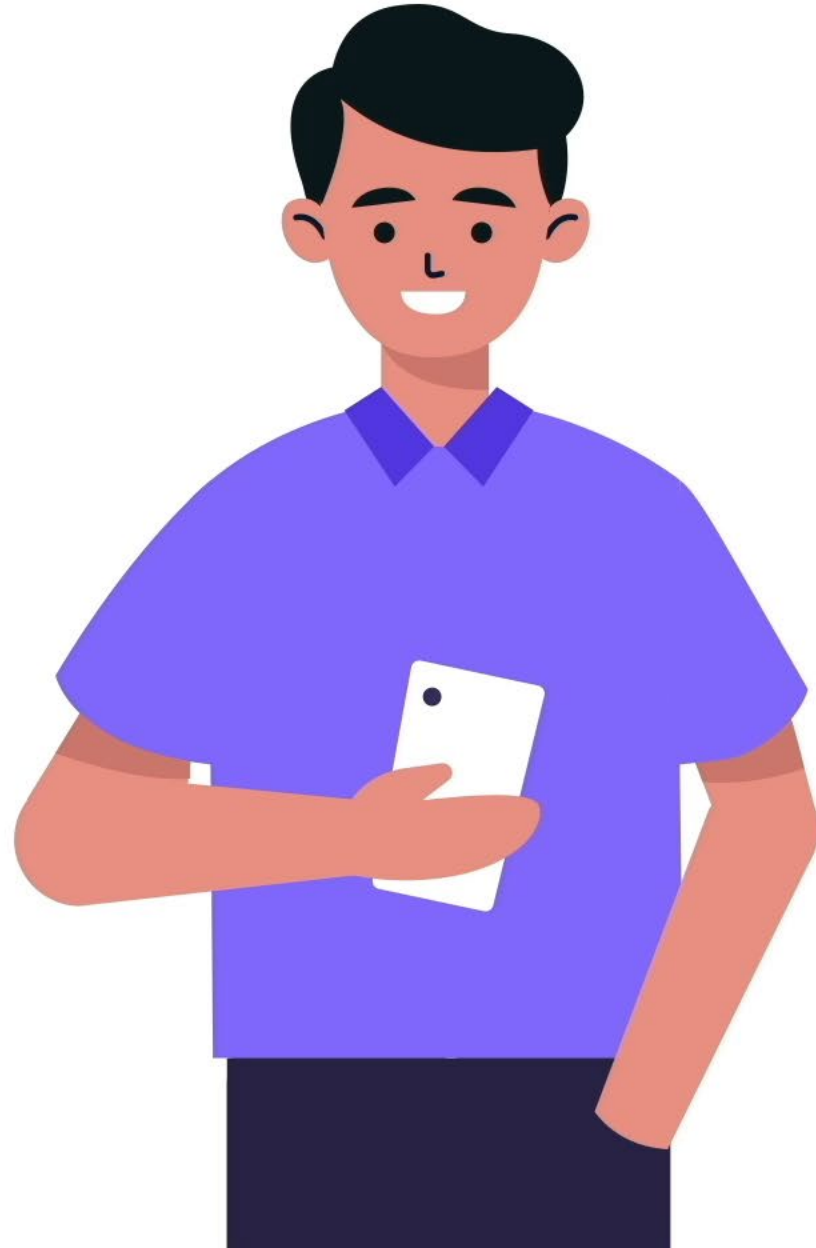
# The Future is Almost Here...

- ▶ Hiring Challenges and status
  - ▶ GRF has hired some new staff however two Full Time positions remain open
- ▶ Implementation of Sparelabs
  - ▶ Training and onboarding for the new OnDemand system has begun with a planned launch in November
- ▶ New service configuration
  - ▶ With the launch of Sparelabs the service will include
    - ▶ OnDemand
    - ▶ Two fixed routes
    - ▶ Downtown service
- ▶ Restore weekend service
  - ▶ As soon as staffing reaches full status, weekends service will be restored



# SpareLabs OnDemand

- ▶ History of OnDemand for Rossmoor Bus Service
  - ▶ 2016 Fher and Pears Study
  - ▶ Initial trial
  - ▶ Covid modifications
- ▶ Implementation of SparLabs
  - ▶ Review of App
  - ▶ Schedule for implementation
  - ▶ Service territory



# Fixed Route

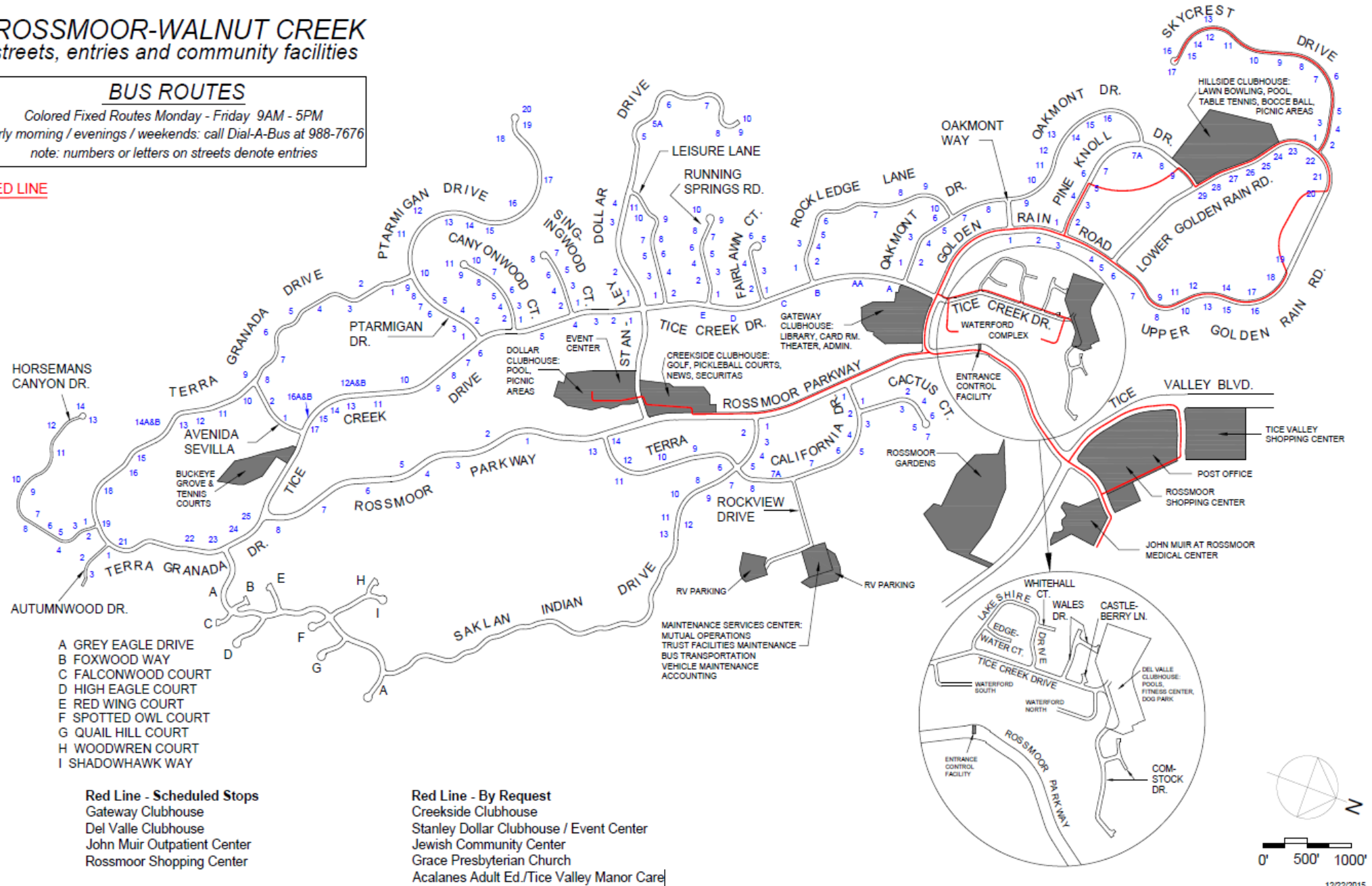
- ▶ Reinstate the Red and Blue lines
- ▶ Highest utilized lines
- ▶ Balance between fixed route and OnDemand

# ROSSMOOR-WALNUT CREEK streets, entries and community facilities

## BUS ROUTES

Colored Fixed Routes Monday - Friday 9AM - 5PM  
early morning / evenings / weekends: call Dial-A-Bus at 988-7676  
note: numbers or letters on streets denote entries

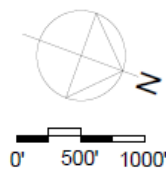
### RED LINE



**BUS ROUTES**  
Colored Fixed Routes Monday - Friday 9AM - 5PM  
early morning / evenings / weekends: call Dial-A-Bus at 988-7676  
note: numbers or letters on streets denote entries

Colored Fixed Routes Monday - Friday 9AM - 5PM  
early morning / evenings / weekends: call Dial-A-Bus at 988-7676  
note: numbers or letters on streets denote entries

HORSEMANS  
CANYON DR.





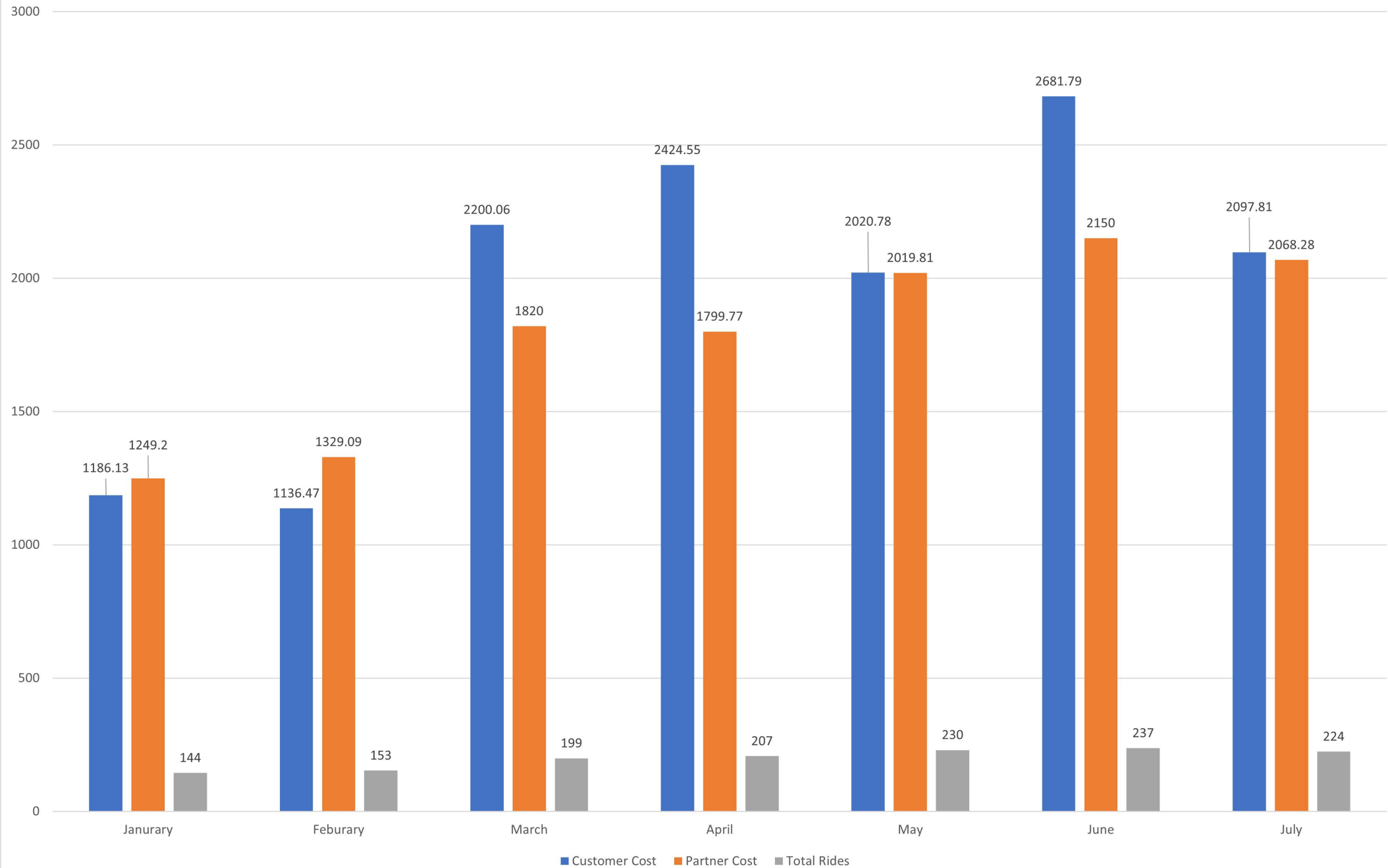
ROSSMOOR  
WALNUT CREEK



# Alternative Services with Uber/Lyfy

- ▶ Current program with GoGo Grandparent
  - ▶ Utilization
  - ▶ Funding
  - ▶ Service area
  - ▶ Process for signing up and scheduling service

GoGo Gandparent 2022





# Low-Speed Automated Shuttle or Shared Autonomous Vehicle (SAV)



- Electric Vehicle

- Low speed Operation (5 to 15 MPH)



- Shared Service (4 to 8 persons passenger capacity)

- Have a “Steward” on board all the time (to be fully automated driving)



- Shared right-of-way (no dedicated lane needed)

# Autonom<sup>®</sup> Shuttle Evo

With neither a steering wheel nor pedals

## 1 10 LiDAR sensors

2D and 3D perception to map the environment, guarantee precise positioning and obstacle detection redundancy.

## 2 Odometry

Wheel speed measurement to estimate vehicle speed and confirm its position.

## 3 GNSS antenna

Communication between a GPS sensor and a reference beacon to determine the exact position of the vehicle at all times.



# CCTA Automated Driving System (ADS) Demo Goals

- ✓ Advance safety of automated driving systems
- ✓ Facilitate data collection to support rulemaking and development of ADS safety performance standards
- ✓ Provide unprecedented mobility choices to transportation-challenged, underserved communities
- ✓ Expand shared mobility options

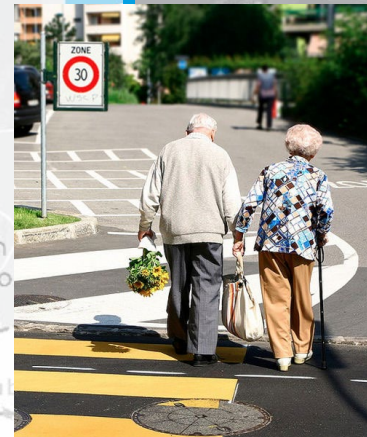


CONTRA COSTA  
transportation  
authority



# Rossmoor SAV shuttle service

- Increase transit accessibility for the senior community using low-speed automated shuttles
- Data gathered will be used to develop safety performance measures



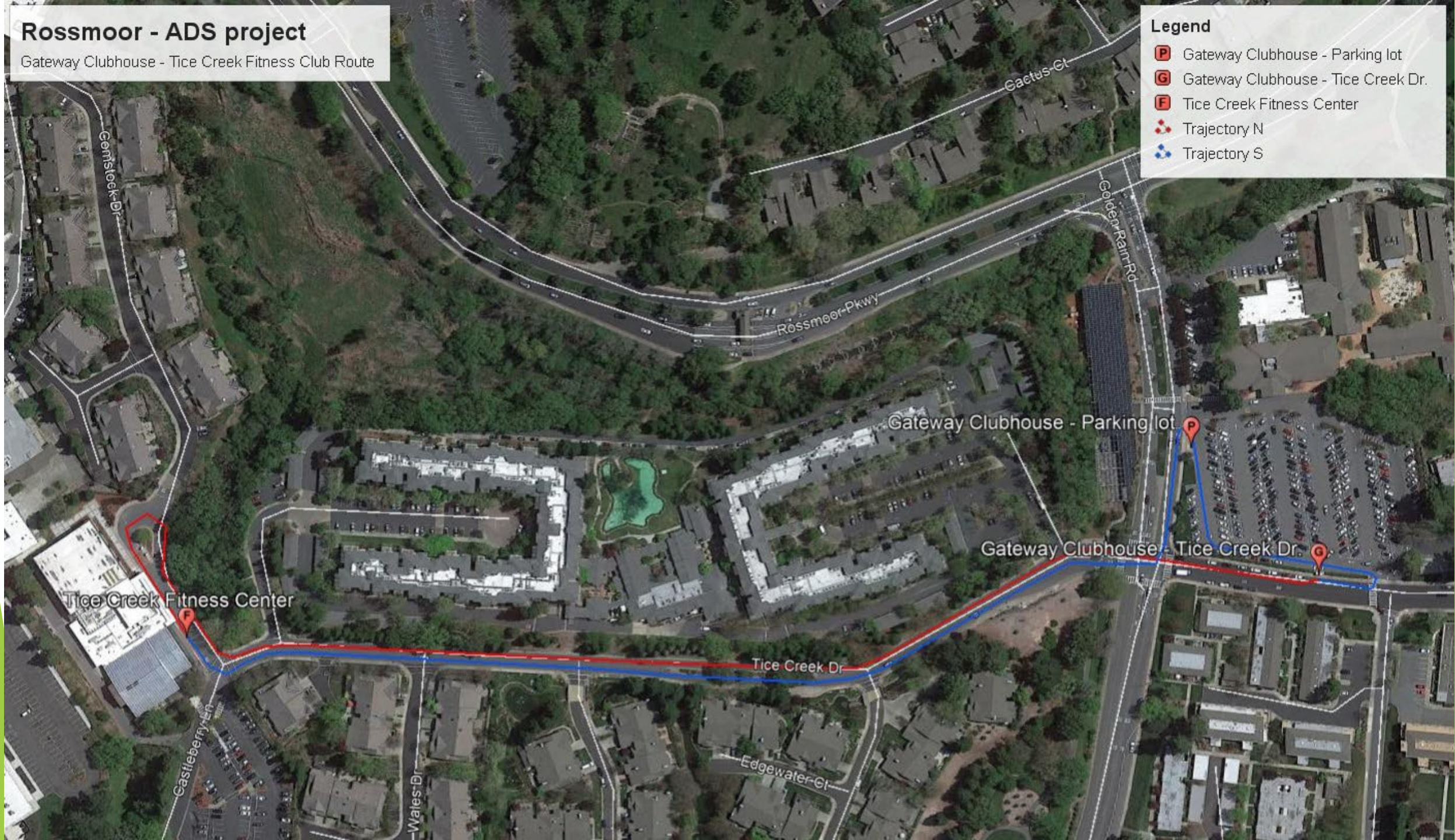


# Rossmoor - ADS project

Gateway Clubhouse - Tice Creek Fitness Club Route

## Legend

- P** Gateway Clubhouse - Parking lot
- G** Gateway Clubhouse - Tice Creek Dr.
- F** Tice Creek Fitness Center
-  Trajectory N
-  Trajectory S







# Rossmoor - ADS Project

Gateway Clubhouse - Creekside Clubhouse

## Legend

-  Creekside Clubhouse
-  depart
-  Gateway Clubhouse
-  return
-  Tice Creek & Running Springs Rd





# Questions