

Community Wildfire Safety Program

ROSSMOOR

April 15, 2021



Safety

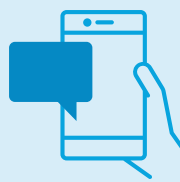
General Safety Tips



Identify two exit routes from your current work area in the event of a fire or other emergency.



“Drop, cover and hold” in the event of an earthquake.

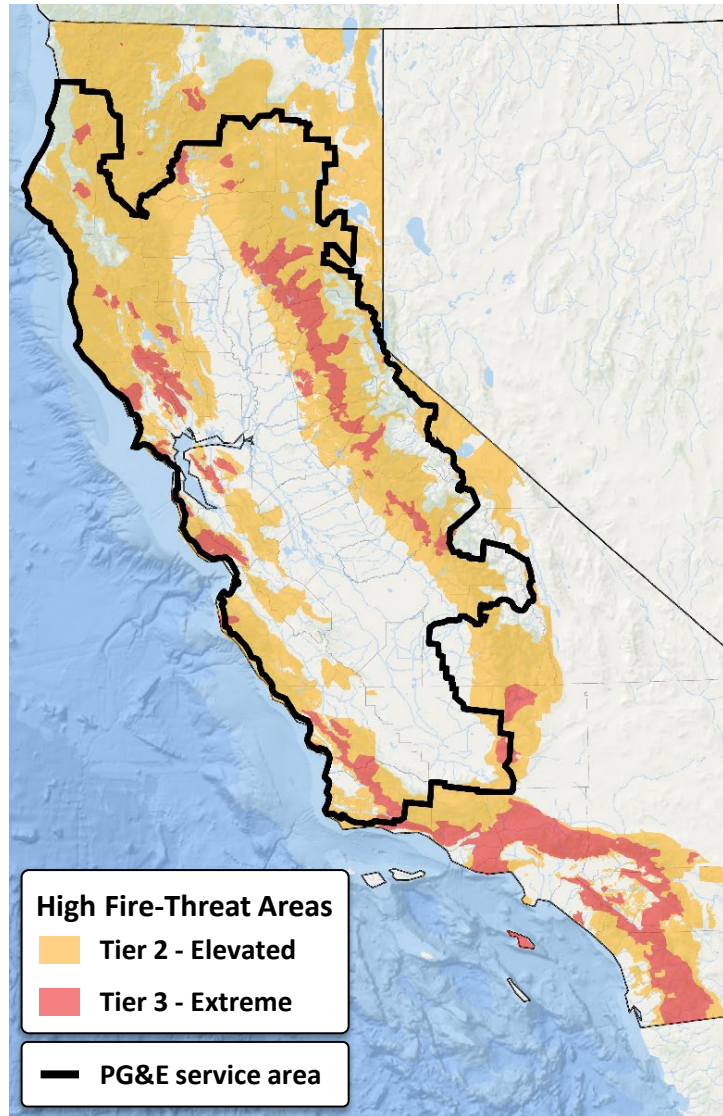


Notify emergency services if you are in danger. You can also ask for help by putting a message in the chat function of this meeting.






Follow COVID-19 safety precautions including wearing a mask in public, practicing social distancing and washing your hands to prevent the spread.

Wildfire Risks Across PG&E's Service Area



Source: California Public Utilities Commission

Some of the measures included in this presentation are contemplated as additional precautionary measures intended to further reduce the risk of wildfires.

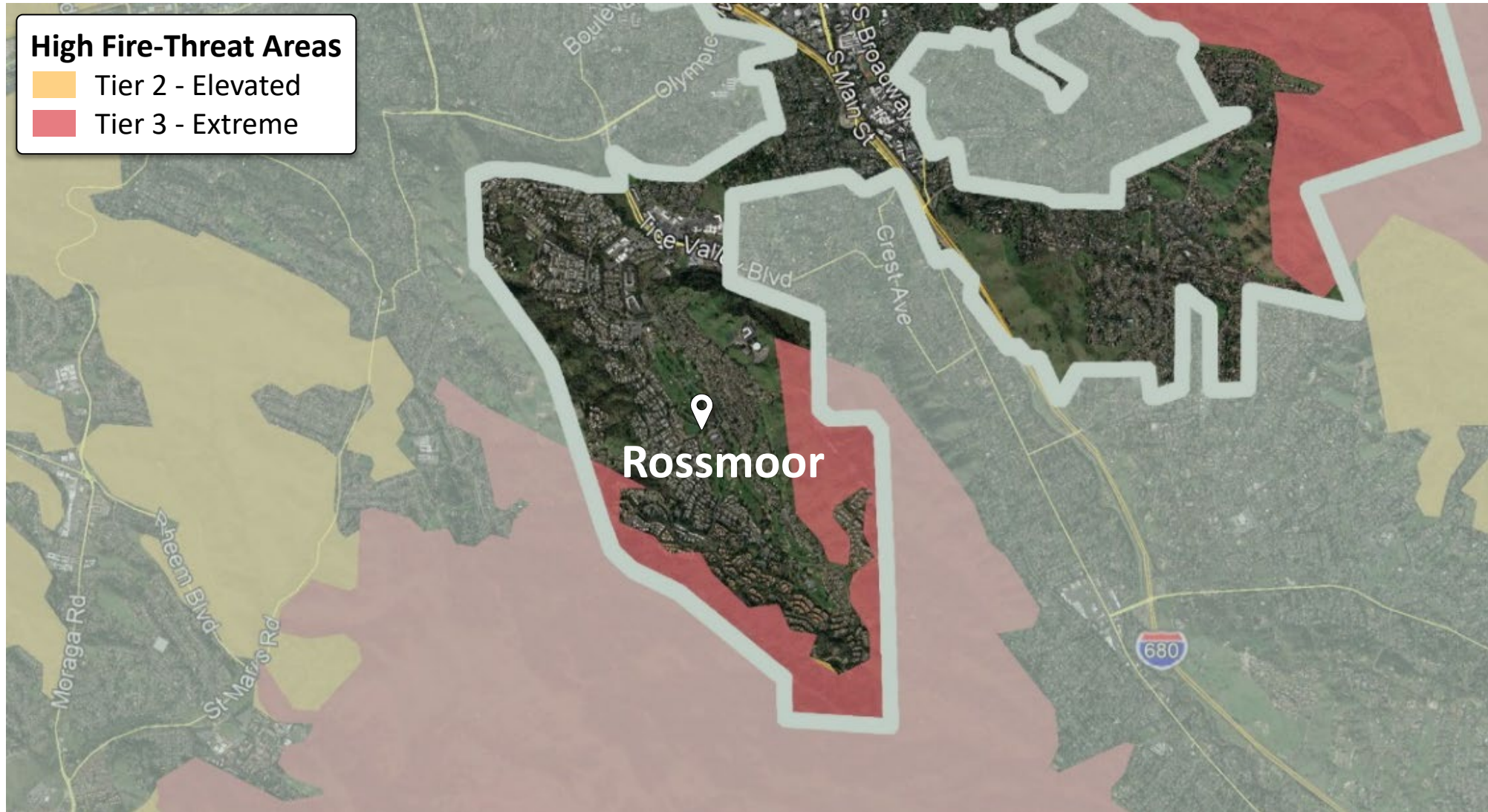
	PG&E SYSTEMWIDE	HIGH FIRE-THREAT DISTRICTS (HFTD)
 Electric customers served	5.5M	500,000
 Overhead distribution line miles	81,000	25,500
 Overhead transmission line miles	18,200	5,500

Numbers are approximate

The map can be accessed at:

cpuc.ca.gov/FireThreatMaps

CPUC Fire-Threat Map – Rossmoor



The CPUC Fire-Threat Map can be accessed at:

cpuc.ca.gov/FireThreatMaps

Community Wildfire Safety Program



REDUCE WILDFIRE POTENTIAL

- Asset inspection and repair
- Enhanced vegetation management (EVM)
- System hardening
- Targeted device replacement
- Public Safety Power Shutoffs (PSPS)



IMPROVE SITUATIONAL AWARENESS

- Wildfire Safety Operations Center
- Weather stations
- High-definition cameras
- Meteorology
- Satellite detection
- Bolster field-based wildfire expertise for program validation



REDUCE IMPACTS OF PSPS EVENTS

- Focus on areas of highest risk
- Continuously improve based on feedback and past experience
- Further expand our ongoing coordination with and support for customers and communities
- Enhanced microgrid capability

Vegetation Management in Rossmoor

ROUTINE Vegetation Management

Meeting state standards that require **4 feet of clearances around distribution power lines** in high fire-threat areas, with recommended **minimum clearances of 12 feet at time of trim** to ensure year-round compliance.



Working with customers and communities to manage trees and other vegetation located near power lines that could cause a wildfire or power outage by:

- Inspecting ~100,000 miles of overhead power lines every year
- Pruning or cutting down more than 1 million trees annually to maintain clearance from power lines
- Cutting down dead, diseased, dying or defective trees, primarily in areas affected by drought and bark beetles

Vegetation Management Projects:

- ✓ Transmission right-of-way vegetation removal project (Spring 2019)
- ✓ Rossmoor substation hardening: vegetation removal (Spring 2019)
- ✓ Vegetation pole clearing around switch 8334

System Hardening and Inspections in Rossmoor

We are installing stronger poles, covered power lines and conducting targeted undergrounding to further reduce wildfire risks. In addition, we evaluate the condition of our equipment on a regular basis through routine patrols and inspections.

System Hardening Projects:

- ✓ Replacement of pole in non-HFTD area with “Spider Excavator” following coordination with Contra Costa Fire Protection
- ✓ Hardening of Rossmoor substation

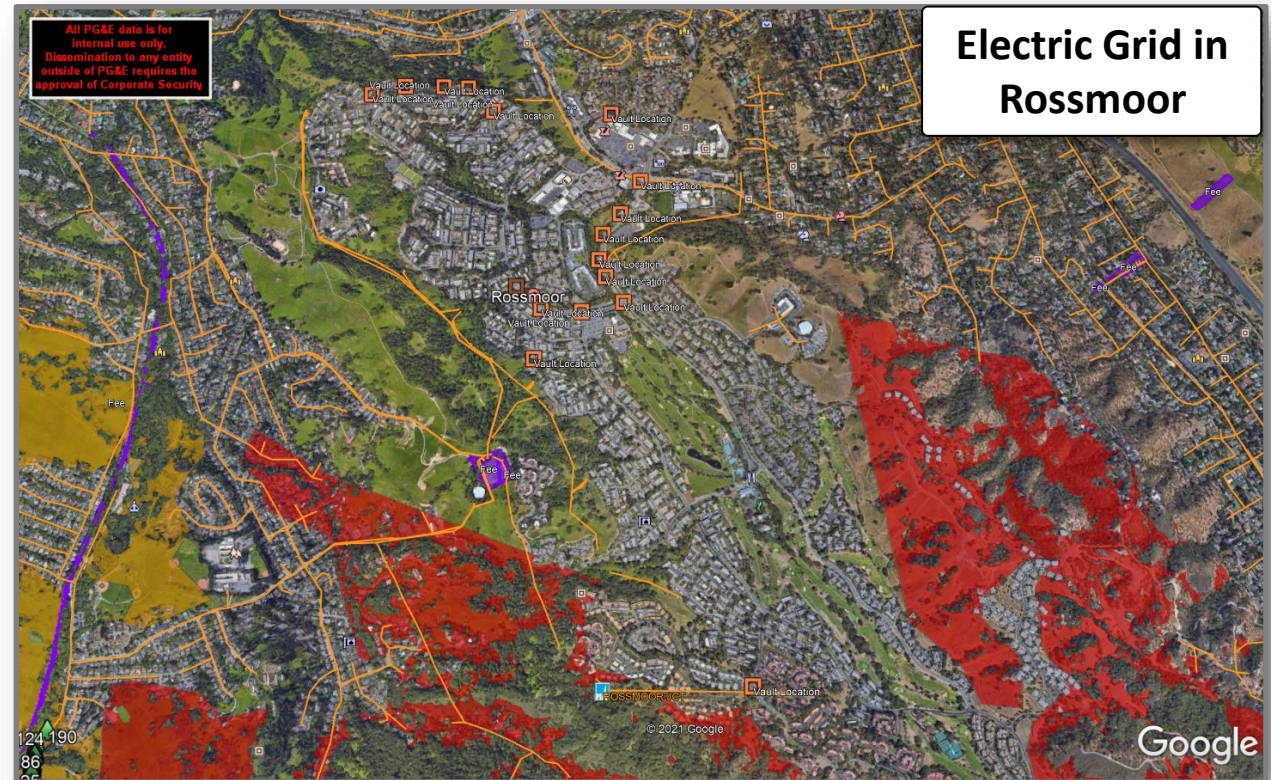


Reducing PSPS Impact in Rossmoor

By installing sectionalizing devices and using transmission line switching, we were able to reduce the potential impact of Public Safety Power Shutoffs (PSPS) within the Rossmoor community.

ROSSMOOR COMMUNITY

2 Sectionalizing devices
installed in 2020



Medical Baseline Program

PG&E's Medical Baseline Program is an assistance program for residential customers who rely on power for certain medical conditions.

Assistance offered:

- **Extra notifications** in advance of a PSPS event, including in-person door knocks by a PG&E representative if positive contact has not been made
- **A lower rate** on monthly energy bills

Examples of Qualifying Medical Conditions and Qualifications:

- Asthma/Sleep Apnea
- Respirators
- Multiple Sclerosis
- Special Heating/Cooling Needs
- IPPB/CPAP Machines
- Hemodialysis Machine

NEED EXTRA HELP BUT DON'T QUALIFY FOR MEDICAL BASELINE?

Self certify as a vulnerable customer.

pge.com/vcstatus

Applying for Medical Baseline



Submit the “Medical Baseline Allowance” application form. Forms can be found by visiting pge.com/medicalbaseline

— OR —



Mail the completed and signed application form to:

PG&E
Attention: Medical Baseline
 P.O. Box 8329
 Stockton, CA 95208

Due to novel coronavirus (COVID-19) shelter-at-home guidelines and changing medical practitioner priorities, **customers can now self-certify their eligibility to enroll in the Medical Baseline Program.** A signature from a qualified medical practitioner is not required to apply.



More Information and Tools to Prepare

For more information about our wildfire safety efforts, visit pge.com/wildfiresafety

For those with specific needs, please consider the following:



Would you like to receive PSPS notifications but are not the PG&E account holder?

Sign up to receive PSPS alerts for any address at

pge.com/addressalerts



Do you need information in a language other than English? Find assistance at

pge.com/mywildfirealerts



Do you want to learn more about the live weather conditions we are tracking in your area?

Get up-to-the-minute weather information at

pge.com/weather



Are you looking for tools and activities to help children prepare for an emergency? Visit our interactive site at

kidsemergencysafety.com



Are you looking for more information on how to stay safe before and during a PSPS event?

Learn more about wildfire risks and how to prepare for emergencies at

safetyactioncenter.pge.com



Do you need backup power? Check out backup power options, safety tips and financing at

See if you qualify for the Portable Battery Program at

pge.com/backuppower

pge.com/storage

Thank You

For more information, please:

- Call us at **1-866-743-6589**
- Email us at **wildfiresafety@pge.com**
- Visit **pge.com/wildfiresafety**

